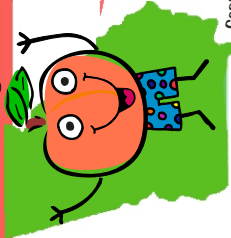


Peach on the Beach

Georgia's Beach Water Quality Monitoring Program



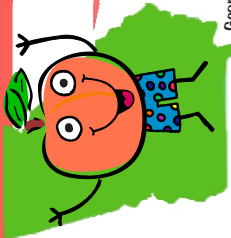
For the most up-to-date
beach advisory information log on to:
<http://crd.dnr.state.ga.us>

Georgia Department of Natural Resources ~ Coastal Resources Division ~ One Conservation Way, Ste. 300 ~ Brunswick, GA 31520 ~ (912) 264-7218



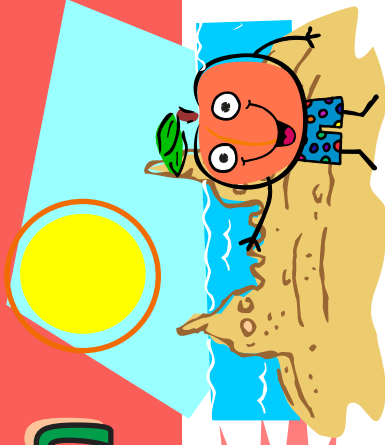
Peach on the Beach

Georgia's Beach Water Quality Monitoring Program



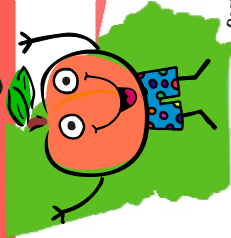
For the most up-to-date
beach advisory information log on to:
<http://crd.dnr.state.ga.us>

Georgia Department of Natural Resources ~ Coastal Resources Division ~ One Conservation Way, Ste. 300 ~ Brunswick, GA 31520 ~ (912) 264-7218



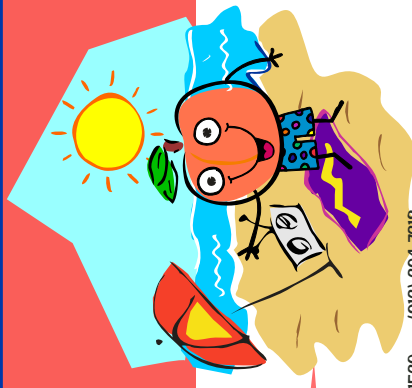
Peach on the Beach

Georgia's Beach Water Quality Monitoring Program



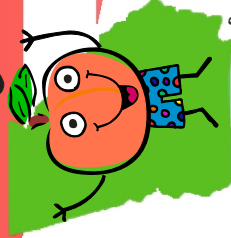
For the most up-to-date
beach advisory information log on to:
<http://crd.dnr.state.ga.us>

Georgia Department of Natural Resources ~ Coastal Resources Division ~ One Conservation Way, Ste. 300 ~ Brunswick, GA 31520 ~ (912) 264-7218



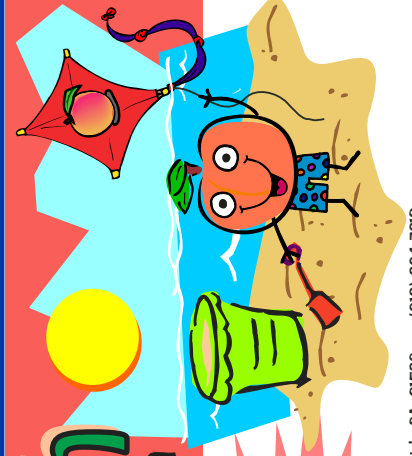
Peach on the Beach

Georgia's Beach Water Quality Monitoring Program



For the most up-to-date
beach advisory information log on to:
<http://crd.dnr.state.ga.us>

Georgia Department of Natural Resources ~ Coastal Resources Division ~ One Conservation Way, Ste. 300 ~ Brunswick, GA 31520 ~ (912) 264-7218



Difference!

What YOU Can Do
to Help Protect Georgia's Coastal Treasures

At Home

When watering your lawn
as well as for all other

native plants to reduce the
needed for home and business

ally non-biodegradable
ceptacles.

pliances including the
are not in the room.
e thermostat at 80 degrees
and in the winter set it at
it or lower.

lets, windows, and doors
des and /or curtains or
nd doors to reduce heat

aringly -- or not at all.
ctions carefully. You'll keep it
ur streams and waterways.
height. A little more height is
deeper root system and less

on the lawn. Clippings
efficient, natural fertilizers.
ur. Too many hazardous
drains through sewage
vers and estuaries.

working properly. Pump
assure proper working

cts sparingly -- or not at all.
rections carefully. If these
streams, roadside ditches, or
an affect plants and animals

eliminate the use of
, and fertilizers on your

icides. A bit of soap and
ned chili pepper powder
eeps harmful chemicals
earby waterways.

ives to harsh household
a or table salt, for instance,
or abrasive cleaners.

pets. Animal waste adds to
er unhealthy.
use public transportation.
combining errands.

oolution by using carpools,
ehicles, recycling motor oil,
hicles in good working

onserve water and lessen
on.

Make a Difference!

Here's What YOU Can Do
to Help Protect Georgia's Coastal Treasures

While Boating

- ◆ Keep it friendly. Waves destroy shorelines and increase erosion. For environmentally friendly boating, observe posted speeds and "no-wake" signs.
- ◆ Secure loose items. Don't let items blow overboard and add to marine debris.
- ◆ Watch out for leaks. Be vigilant about oil leaks from boat engines. Not only are leaking engines harmful, but it's also illegal to leave a slick on the water.
- ◆ Mop up. Use environmentally friendly cleaning products and don't clean up by tossing debris out to sea. Trash, chemicals, plastic bags, and fishing lines can pollute or strangle vulnerable marine life.

In the Community

- ◆ Share your knowledge. Spread the word about America's estuaries. Share what you know about protecting them - with our families, students, community leaders, and others.
- ◆ Take action! Organize a stream or beach cleanup.
- ◆ Encourage your local newspaper to write a story, or ask an expert to speak at your local school or community organization.
- ◆ Scoop the poop! Pick up your pet's waste and dispose of properly.
- ◆ Watch out for contamination. Support periodic testing to make sure that pesticides aren't contaminating golf course waters, adjacent creeks, and groundwater.

Make a Difference!

Here's What YOU Can Do
to Help Protect Georgia's Coastal Treasures

At the Waterfront

- ◆ Protect waterside trees and shrubs. Forests and sea oats are a protective gift along the water's edge and should not be cut, pruned or altered in any way.
- ◆ Plant buffer strips. Restore riverside grasses, shrubs, and trees to filter pollutants, sediments, and excess nutrients from ground and surface water.
- ◆ Avoid erosion. Place mulch over disturbed soil in heavily used areas.
- ◆ Pave less. Hard surfaces hasten run-off and erosion.
- ◆ Curb run-off. When storm water is a problem, create a path or ledge to both capture run-off and filter pollutants through sand.

When Fishing

- ◆ The most fun part of fishing is catching. Help make sure there will be fish in your future to catch. Keep only fish that you will eat; release the rest.
- ◆ Take pictures of trophy fish and release them properly instead of mounting them.
- ◆ Practice ethical fishing methods by learning how to properly catch and release.
- ◆ Fish only species that are not of concern, threatened, or endangered.
- ◆ Know the size limits, bag limits, and seasons of the fish you are catching.
- ◆ Be a smart shopper, choose your seafood responsibly.
- ◆ Protect wildlife by disposing of fishing lines and nets properly, not in or near the water.
- ◆ Eliminate poisons. When fishing, use non-toxic alternatives to lead sinkers and jigs.

Make a Difference!

Here's What YOU Can Do
to Help Protect Georgia's Coastal Treasures

When at the Beach

- ◆ Have fun on the beach. Clean. When you leave the beach, your trash should be gone.
- ◆ Be sure to bring enough trash bags with you.
- ◆ Watch your step. To avoid damage to sensitive regions, use a canoe or kayak. Don't destroy sensitive areas.
- ◆ Respect life on the beach. Don't step on rocks at the beach. Put them back so that they can be used on top, like barnacles. Don't step on those that live on the beach.
- ◆ Take only memories, leave only footprints.
- ◆ Dunes are delicate areas. They are nesting habitat for shorebirds and turtles. Please stay off.
- ◆ Scoop the poop! Pick up your pet's waste and dispose of properly.
- ◆ Some butts don't belong. Take all trash including cigarette butts with you and dispose of properly.

While Playing

- ◆ Puncture inflated balls. Don't play on the beach. Dispose of properly.
- ◆ Protect wildlife by not feeding animals including birds, dolphins, and whales.
- ◆ Protect ocean wildlife. Don't touch the nests and nesting birds and sea turtles.
- ◆ Keep animal homes safe. Don't play, if you see a baby animal, do not touch it.
- ◆ Let nature be natural. Don't take baby animals from the beach.